

Human/Cynomolgus/Rhesus macaque ROR1 Protein

Cat. No. ROR-HM401

Description

Source	Recombinant Human/Cynomolgus/Rhesus macaque ROR1 Protein is expressed from HEK293 with His tag and Avi tag at the C-Terminus. It contains Gln30-Glu403.
Accession	Q01973-1
Molecular Weight	The protein has a predicted MW of 44.9 kDa. Due to glycosylation, the protein migrates to 55-70 kDa based on Tris-Bis PAGE result.
Endotoxin	Less than 1EU per μg by the LAL method.
Purity	> 95% as determined by Tris-Bis PAGE > 95% as determined by HPLC

Formulation and Storage

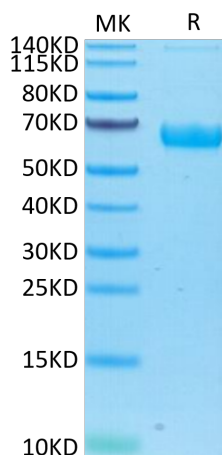
Formulation	Lyophilized from 0.22 μm filtered solution in PBS (pH 7.4). Normally 8% trehalose is added as protectant before lyophilization.
Reconstitution	Centrifuge the tube before opening. Reconstituting to a concentration more than 100 $\mu\text{g}/\text{ml}$ is recommended. Dissolve the lyophilized protein in distilled water.
Storage	-20 to -80°C for 12 months as supplied from date of receipt. -80°C for 3-6 months after reconstitution. 2-8°C for 2-7 days after reconstitution. Recommend to aliquot the protein into smaller quantities for optimal storage. Please minimize freeze-thaw cycles.

Background

ROR1 (Receptor tyrosine kinase-like orphan receptor 1), also known as neurotrophic tyrosine kinase receptor-related 1 (NTRKR1), is a member of the ROR family within receptor tyrosine kinases (RTK) superfamily. Two ROR family members (ROR1 and ROR2) have been identified and are characterized by the intracellular tyrosine kinase domains, highly related to those of the Trk-family receptor tyrosine kinases, and by the extracellular Frizzled-like cysteine-rich domains and kringle domains, which are common to receptors of the Wnt family members.

Assay Data

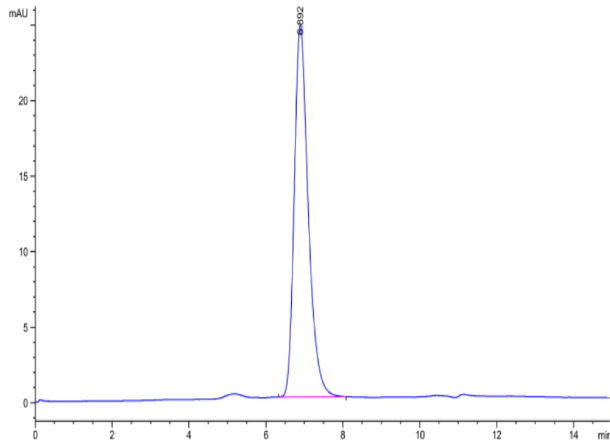
Tris-Bis PAGE



Human/Cynomolgus/Rhesus macaque ROR1 on Tris-Bis PAGE under reduced condition. The purity is greater than 95%.

SEC-HPLC

Assay Data



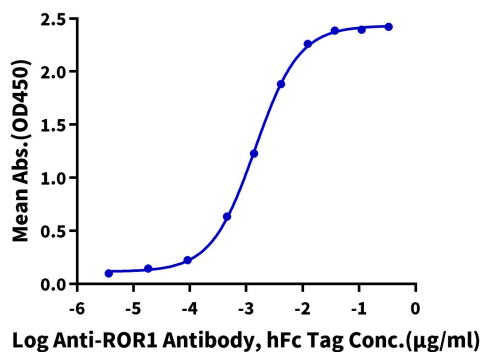
The purity of Human/Cynomolgus/Rhesus macaque ROR1 is greater than 95% as determined by SEC-HPLC.

Assay Data

ELISA Data

Human/Cynomolgus/Rhesus macaque ROR1, His Tag ELISA

0.1µg Human/Cynomolgus/Rhesus macaque ROR1, His Tag Per Well



Immobilized Human/Cynomolgus/Rhesus macaque ROR1, His Tag at 1µg/ml (100µl/Well) on the plate. Dose response curve for Anti-ROR1 Antibody, hFc Tag with the EC50 of 1.4ng/ml determined by ELISA.